

WHY CIFA



Truck Pumps **STEELTECH** Series



WHY CIFA



MORE THAN 15.000 TRUCK PUMPS SOLD IN THE WORLD

It was the end of 60's when Cifa produced the first truck pump. Since then, Cifa has been designing, producing and developing the most advanced technology, bringing every year to the market new reliable solutions. Solutions to prove that CIFA truck pumps are better than ever. Always.



READY FOR DELIVERY



MANUFACTURING FACILITIES



LEAN PRODUCTION



PLACING BOOMS
Available lengths to reach all distances: from 20 meters to 58 meters.



STABILIZATIONS
Different types of stabilization in order to guarantee a safe work in a small area.



PUMPING UNITS
Two open loop types and three closed loop types according to the desired way of pumping.



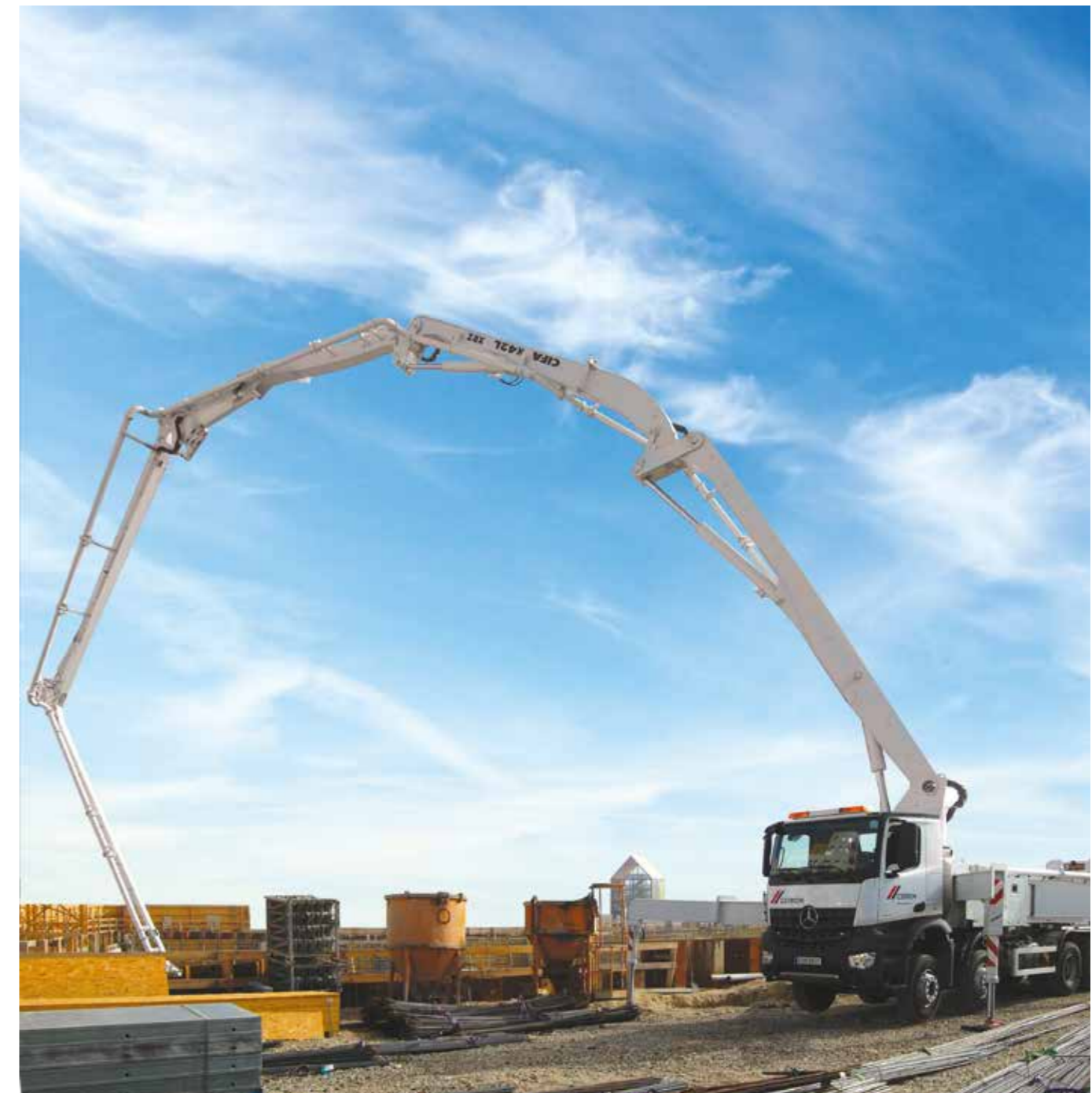
CONTROL SYSTEMS
Designed and positioned to make the job easier and to speed up all the operations.



SAFETY
Different systems to work and move the boom in all its configurations in total safety.



FINISHING
Customized painting available upon customers' request.



LEASING



Available in Italy, Russia, China, South Africa, Australia, USA and Germany

ITALIAN DESIGN



Main components of the CIFA truck pumps are Italian or German brand

MOUNTED ON ALL TRUCK BRANDS



CIFA truck pumps can be mounted on all truck brands. According to CIFA truck specifications documentation

TRAINING FOR OPERATORS





PLACING BOOM

STRENGTH AND RELIABILITY:
The booms mounted on CIFA truck pumps combine both strength and reliability. Each section of the boom has been designed for maximum structural resistance and fatigue strength. These advanced booms reduce to the minimum the areas subjected to stress intensification when in operation.

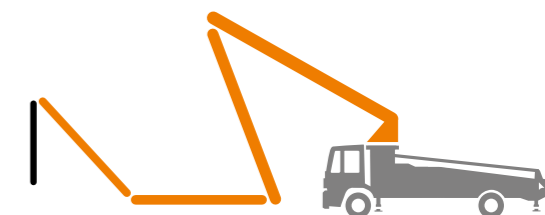
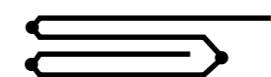


VERSATILITY AND FLEXIBILITY:
Different configurations of the booms on CIFA truck pumps ensure the greatest operative versatility and enable to reach almost any part of the construction yard, even those accessible with the most difficulty. Complete working flexibility together with great working speed, allows the complete extension of the boom and its perfect positioning in few minutes.



ZR Type

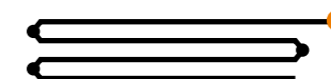
Suitable for the boom opening inside the buildings and for concrete pouring near the truck pump.



Available for:
K20L - K24L

Z Type

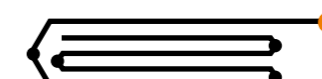
Quick opening operations for concrete pouring near and far from the truck pump.



Available for:
K30L - K31L - K35L - K36L - K38L

RZ Type

Ideal for 5 and 6 sections boom. It provides maximum flexibility by combining R+Z solutions.



Available for:
K37L - K42L - K48 - K52L - K55L - K58L - K61L - K63L

The structural strength and stiffness of the sections ensure limited oscillations even on longer booms.

The working speed, guarantees the complete extension of the boom and a quick and perfect positioning.

FOLDING SYSTEMS



STABILIZATION

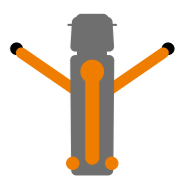


The front stabilization is available in four design concepts: single horizontal, single, double and triple telescopic-X-style outriggers. The rear stabilization is available in three design concepts: fixed, single extension and swing-out. Each machine has its stabilization system according to the size of the boom.



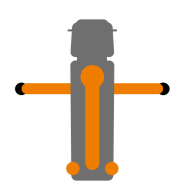
Front: **Single telescopic X style**
Rear: **Fixed**

Available for:
K30L



Front: **Single telescopic horizontal**
Rear: **Fixed**

Available for:
K20L



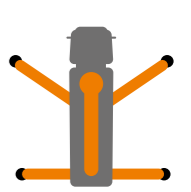
Front: **Double telescopic X style**
Rear: **Fixed**

Available for:
K24L



Front: **Single telescopic X style**
Rear: **Single horizontal**

Available for:
K31L



Front: **Single telescopic X style**
Rear: **Swing-out**

Available for:
K35L - K36L - K37L - K38L



Front: **Double telescopic X style**
Rear: **Swing-out**

Available for:
K42L



Front: **Triple telescopic X style**
Rear: **Swing-out**

Available for:
K48 - K52L - K55L - K58L - K61L - K63L



All outriggers are designed to stabilize the machine in the right way in extraordinary tight spaces.

The sequences of the extension phase are quick in order to accelerate the stabilization.

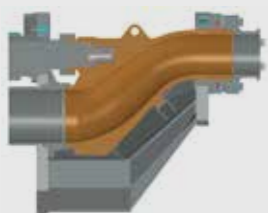
Each outrigger can be used as a tank with a capacity ranging from 400 to 700 liters.





PUMPING UNIT

Completely removable, the pumping unit ensures gentle, continuous and regular flow. This technology guarantees an extremely efficient system for pumping different types of concrete, with aggregates of all sizes, reducing the number of cycles per minute while maintaining the same flow rate, thus ensuring less wear and longer life.



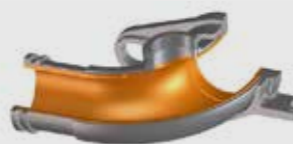
“S” VALVE:
The structure is made with varying thickness to achieve maximum resistance to wear even when using difficult types of concrete.



CIFA LONG LIFE PIPES MADE BY CIFA
CIFA truck pumps have long life pipes as standard equipment.



WEAR RING AND WEAR PLATE:
The ring and the plate are made of special anti wear material against abrasion and stress due to the concrete flow.



CIFA truck pumps have the first bend outside the pumping unit in long life pipes as standard equipment.

Open Loop: Hydraulic management

709

Available for:
K20L



HP907H

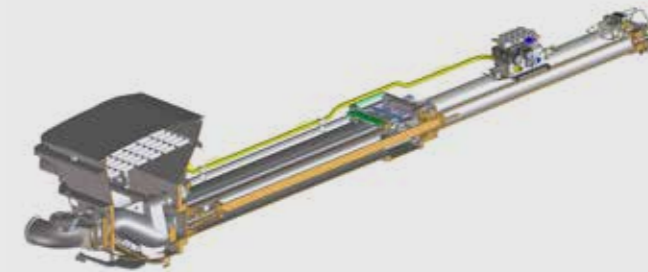
Available for:
K24L



HP1606H

Available for:

**K31L - K35L - K36L - K37L - K38L
K42L - K48 - K52L - K55L - K58L - K61L**



Closed Loop: Electronic or hydraulic management

HP1608EC

Available for:

**K24L - K31L - K35L - K36L - K37L
K38L - K42L - K48**



HP1808ECX

Available for:

K42L - K48 - K52L - K55L - K58L - K61L - K63L



PUMPING UNITS		709	HP907H	HP1606H	HP1608EC	HP1808ECX
MAX. THEORETICAL OUTPUT	m ³ /h	70	90	160	160	180
MAX. PRESSURE ON CONCRETE	bar	85	85	53	80	83
MAX. NUMBERS OF CYCLES PER MIN.	n	25	70	30	31	27
CONCRETE CYLINDERS (DIAM. X STROKE)	mm	200x1500	200x1650	230x2100	230x2100	260x2100
CONCRETE HOPPER CAPACITY	l	500	550	550	550	600
HYDRAULIC CIRCUIT	type	open	aperto	open	closed	closed



CONTROL SYSTEMS



BOOM PROPORTIONAL DISTRIBUTOR
Ergonomic hydraulic controls for boom.



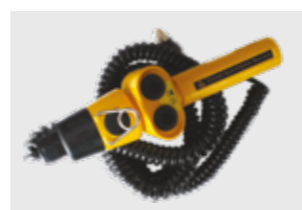
DETACHABLE ELECTRICAL SYSTEM
The electrical system can be detached for easy maintenance.



REMOTE CONTROL
Comfortable and lightweight for boom control and the management of the main machine functions. Different models and brands available.



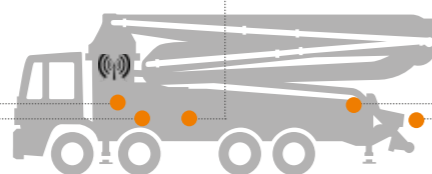
HYDRAULIC OUTRIGGERS CONTROL
Hydraulic controls on both sides of truck pump. The machine emergency stop is also positioned nearby.



WIRED VIBRATOR AND HORN REMOTE
Convenient cable control dedicated to the mixer driver. It can be used from both sides of the hopper.



REAR CONTROL PANEL
Control panel positioned on the rear side.



Easytronic

Machine Management system for Steeltech series pumps With Open Loop pumping units

SILVER (Standard)



DISPLAY LCD 4.3"
The standard version includes:
• Pumping unit management
• Diagnostics
• Counters
• Auto vibration

GOLD (Option)

Easytronic Silver + LSC - Light Stability Control



Limits the boom slewing angle when any outrigger cannot be fully opened.
Includes: Autoprpm

Smartronic®

Machine Management system for Steeltech series pumps With Closed Loop pumping units

SILVER (Standard)



DISPLAY LCD 7"



PUMPING UNIT MANAGEMENT
Automatic hopper-grid vibration



DIAGNOSTICS
In case of fault, the operator is guided to understand what's the subpart involved and graphically guided to understand the issue



COUNTERS

GOLD (Option)

Standard for Carbotech series (excl. K40H)
Includes SILVER functions plus:



AUTO RPM
Fully adjustable automatic truck RPM management



RAMPS MANAGEMENT
Fully adjustable pumping ramps management



MBE Max Boom Extension



ASC Advanced Stability Control

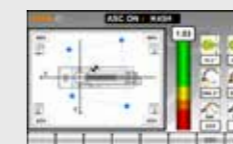
Smartronic Advanced

(Add-on Option for Smartronic GOLD)



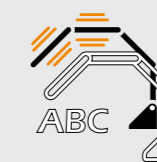
Automatic Boom Folding and Unfolding

The function allows to open and close the boom automatically using a dedicated command on the radio remote.



ASC 2.0

Gives the possibility to move some boom sections even when the limit of the safety coefficient is reached.



Boom Antibouncing System

The Anti-Bouncing function strongly reduces boom oscillations (up to -25%).



Radio remote control with display



SAFETY



MECHANICAL LOCK FOR ALL OUTRIGGERS



GRID PROTECTION WATER BOX



LIMIT SWITCH HOPPER GRID



PROTECTION FOR S-VALVE CYLINDERS



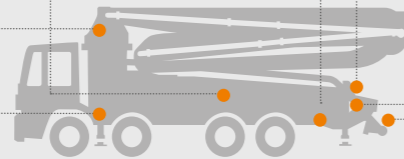
BOOM ROTATION LIMIT SWITCH



SUPPORT PLATES HOLDER



OUTPUT BEND LOCKING SYSTEM



FOLDING BUMPER BAR WITH INTEGRATED LIGHTS



TWO DIFFERENT TYPES OF SHUT OFF VALVE AS OPTION

The shut-off valve stops immediately the flow of the concrete.



Shut Off valve in pipeline



Shut Off valve on endhose



Activated by remote control

High pressure water pump



List of other components available on demand

Air compressor for pipeline cleaning



Remote monitoring



Rear camera



OPTIONS



K38L - RUSSIA



K36L - TURKEY



K20L - ENGLAND



K42L - USA



K48 - BRAZIL



K58L - ITALY



K55L - SAUDI ARABIA

JOB SITES

DATA SHEET

STEELTECH

Find more info on truck configuration at www.cifa.com



K20L

PLACING BOOM	4ZR 20/16
PUMPING UNIT	70 m³/h 85 bar
DRIVEN BY	PTO OR GEAR BOX
CHASSIS	2 AXLES



K38L

PLACING BOOM	4Z 38/34
PUMPING UNIT	160 m³/h 53 bar
	160 m³/h 80 bar
DRIVEN BY	PTO OR GEAR BOX
CHASSIS	3 - 4 AXLES



K42L

PLACING BOOM	5RZ 42/38
PUMPING UNIT	160 m³/h 53 bar
	160 m³/h 80 bar
	180 m³/h 83 bar
DRIVEN BY	PTO OR GEAR BOX
CHASSIS	4 AXLES



K24L

PLACING BOOM	4RZ 24/20
PUMPING UNIT	90 m³/h 85 bar
	160 m³/h 80 bar
DRIVEN BY	PTO OR GEAR BOX
CHASSIS	2 - 3 AXLES



K30L

PLACING BOOM	4Z 30/26
PUMPING UNIT	150 m³/h 53 bar
	140 m³/h 80 bar
DRIVEN BY	PTO OR GEAR BOX
CHASSIS	3 AXLES



K31L

PLACING BOOM	5Z 31/27
PUMPING UNIT	160 m³/h 53 bar
	160 m³/h 80 bar
DRIVEN BY	PTO OR GEAR BOX
CHASSIS	3 - 4 AXLES



K48

PLACING BOOM	5RZ 48/44
PUMPING UNIT	160 m³/h 53 bar
	180 m³/h 83 bar
DRIVEN BY	PTO OR GEAR BOX
CHASSIS	4 AXLES



K52L

PLACING BOOM	6RZ 52/48
PUMPING UNIT	160 m³/h 53 bar
	180 m³/h 80 bar
DRIVEN BY	PTO OR GEAR BOX
CHASSIS	4 - 5 AXLES



K55L

PLACING BOOM	5RZ 55/50
PUMPING UNIT	160 m³/h 53 bar
	180 m³/h 80 bar
DRIVEN BY	PTO OR GEAR BOX
CHASSIS	4 - 5 AXLES



K35L

PLACING BOOM	5Z 35/31
PUMPING UNIT	160 m³/h 53 bar
	160 m³/h 80 bar
DRIVEN BY	PTO OR GEAR BOX
CHASSIS	3 - 4 AXLES



K36L

PLACING BOOM	4Z 36/32
PUMPING UNIT	160 m³/h 53 bar
	160 m³/h 80 bar
DRIVEN BY	PTO OR GEAR BOX
CHASSIS	3 - 4 AXLES



K37L

PLACING BOOM	5RZ 37/33
PUMPING UNIT	160 m³/h 53 bar
	160 m³/h 80 bar
DRIVEN BY	PTO OR GEAR BOX
CHASSIS	3 - 4 AXLES



K58L

PLACING BOOM	6RZ 58/54
PUMPING UNIT	160 m³/h 53 bar
	180 m³/h 80 bar
DRIVEN BY	PTO OR GEAR BOX
CHASSIS	5 AXLES



K61L

PLACING BOOM	5RZ 61/56
PUMPING UNIT	160 m³/h 53 bar
	180 m³/h 80 bar
DRIVEN BY	PTO OR GEAR BOX
CHASSIS	5 AXLES



K63L

PLACING BOOM	6RZ 63/58
PUMPING UNIT	180 m³/h 80 bar
DRIVEN BY	PTO OR GEAR BOX
CHASSIS	6 AXLES



Discover more at www.cifa.com

Distributor



CIFA S.p.A.

Via Stati Uniti d'America, 26
20030 Senago (Milano) - Italy

tel. +39.02.990131

fax. +39.02.9981157

sales@cifa.com

www.cifa.com

