



* Technical data and characteristics subject to modifications without notice

Pumping unit technical data

		PA709F8
Max. theoretical output	m ³ /h	70
Max. pressure on concrete	bar	85
Conc. cylinders (diam. x stroke)	mm	200 x 1500
Concrete hopper capacity	l	550

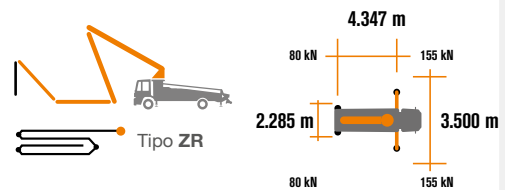
Total weight less than 18 tons, payload to the user always available.

Super compact machine mounted on 4x2 4100* wheelbase trucks for excellent maneuverability.

Contained stabilisation dimensions for easy placement in all types of job sites.

Control System with pumping unit PA709F8

Integrated color LCD	Diagnostics
Counters	Capsense rear panel
Pumping unit management	



Placing boom technical data

		B4ZR 20/16
Pipeline diameter	mm	125
Max. vertical reach	m	19.75
Max. horizontal distance	m	16,1
Min. unfolding height	m	3.95
Sections number		4
1st section opening angle		90°+8°
2nd section opening angle		180°
3rd section opening angle		253°
4th section opening angle		253°
Rotating angle		+/-270°
End hose length	m	3

Optional



Lsc Safe boom operation is guaranteed when two, three or four outriggers are fully opened.



MBE Maximum boom extension control



Automatic RPM Management



STEELTECH Series

K20L

Standard Equipment

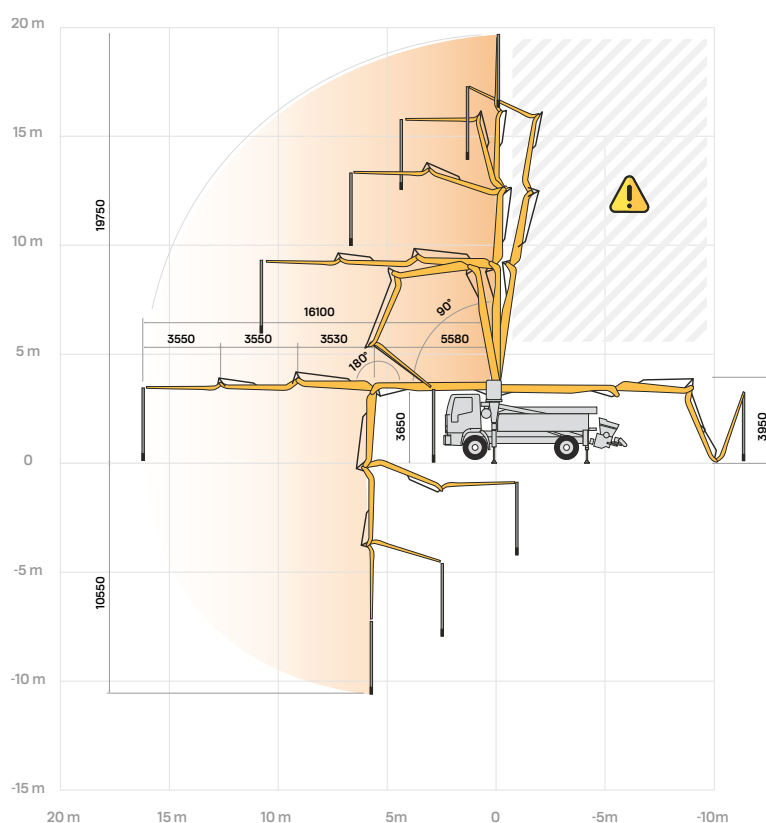
- Front "X" style outriggers for a quick set-up and easy pump placement in narrow areas
- Driven by PTO or gear box
- Boom control by means of "Load Sensing" proportional distributor
- Safety device upon opening of concrete discharge door and hopper grille
- Emergency device for pumping group
- 2 Hetriconic proportional radio controls with 3 manipulators
- Emergency radio control cable 20 m
- Plastic water tank with 600-litre capacity
- Medium pressure water pump (50 l/min - 50 bar)
- LED lights for stabilisation and hopper lighting
- Double layer piping with chromium carbide inserts on the entire piping line
- Washing accessories
- High resistance of the components most subject to wear ("S" valve, wear plate, compensating ring)
- Declaration of conformity supplied with the user and maintenance manual

Main Options

- Easytronic Gold (Easytronic Silver + LSC Light Stability Control)
- Automatic boom opening and closing
- Centralized boom lubrication system
- Concrete shut-off valve
- High pressure water pump 28l / 120 bar
- Radio remote control: Hetriconic or HBC equipped with display
- Straight concrete piping on double layer boom with high wear-resistance chromium carbide inserts CIFA LLT Long Life Top
- Wide choice of customer personalization colours

*Over 100 options available; details available on truck pumps optional booklet

Distribution boom B4ZR 20/16



Product Video

