



4143\*

5000\*

6350\*

14980\*

\* Technical data and features subject to change without notice

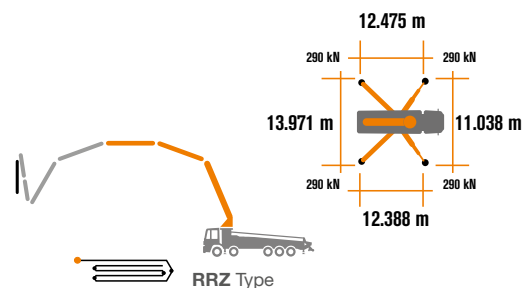
### Pumping unit technical data

		HP18o8ECX
Max. theoretical output	m <sup>3</sup> /h	180
Max. pressure on concrete	bar	83
Concrete cylinders (diam. x stroke)	mm	260 x 2100
Concrete hopper capacity	l	600
Hydraulic circuit		closed

7 Sections boom with RRZ folding.

Machine mounted on 12x4 5000\* wheelbase trucks for excellent manoeuvrability.

Contained stabilisation dimensions for easy placement in all types of job sites.



### Control System

#### Smartronic Gold

- ASC Advanced stability control
- MBE Maximum boom extension control
- Auto RPM engine speed adjustment
- Working ramps kit for the pumping unit
- LCD monitor
- Counters
- Pumping unit management
- Diagnostics
- Rear capsense control panel

#### ASC is standard equipment



The automatic continuous verification of the center of gravity of the machine guarantees the maximum safety of boom movement and the maximum possible coverage of the job area, even with partial opening of the stabilization.



**MBE**  
Maximum  
boom extension  
control



**Automatic  
RPM  
Management**

### Placing boom technical data

		B7RRZ 67/62
Pipeline diameter	mm	125
Max. vertical reach	m	66.1
Max. horizontal distance (from center of slewing axis)	m	60.9
Net horizontal reach		55.7
Min. unfolding height	m	15.4
Sections number		7
1 <sup>st</sup> section opening angle		90°
2 <sup>nd</sup> 3 <sup>rd</sup> 4 <sup>th</sup> 5 <sup>th</sup> section opening angle		180°
6 <sup>th</sup> section opening angle		210°
7 <sup>th</sup> section opening angle		90°
Rotating angle		+/-270°
End hose	m	3



# CARBOTECH Series K67H

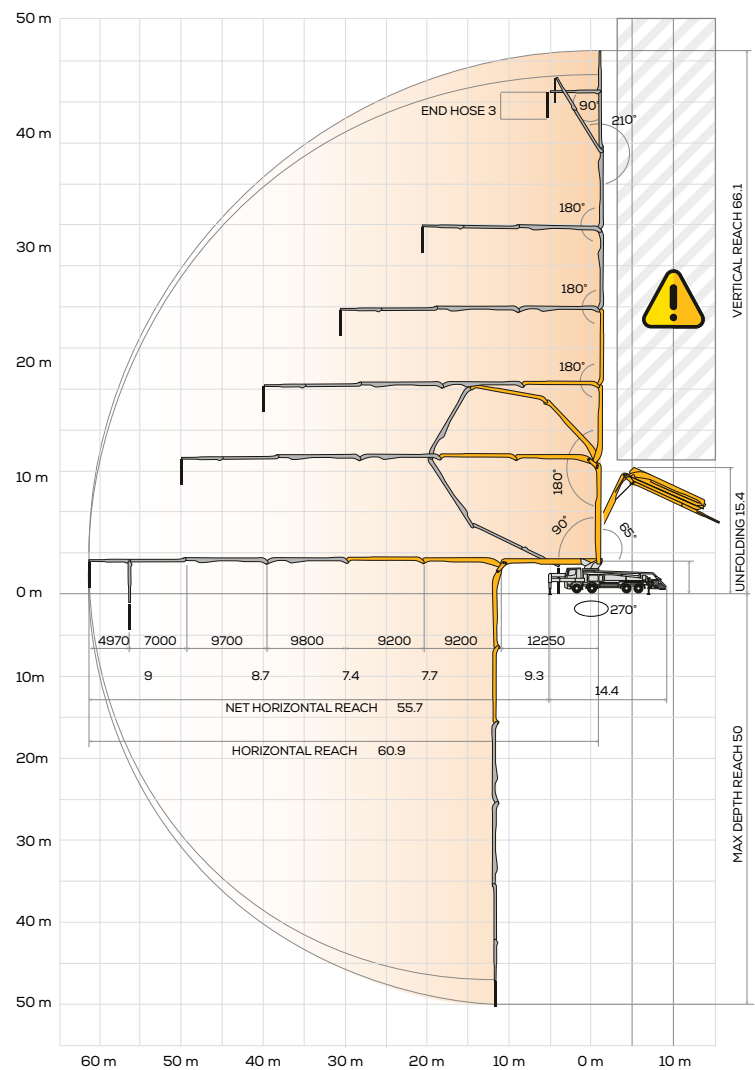
## Standard equipment

- Section I, II and III made of high strength steel
- IV, V, VI e VII made of light in carbon fiber
- Front "X" style diagonal outriggers with triple telescopic opening and swing-out rear outriggers for a quick and easy set-up also in narrow areas
- Driven by PTO or gear box
- Boom control by means of "Load Sensing" proportional distributor
- Safety device upon opening of concrete discharge door and hopper grille
- Emergency device for pumping group
- 2 Hetronic proportional radio controls with 3 manipulators
- Emergency radio control cable 20 m
- Plastic water tank with 600-litre capacity
- Medium pressure water pump (50 l/min - 50 bar)
- LED lights for stabilisation and hopper lighting
- Double layer piping with chromium carbide inserts on the entire piping line
- Washing accessories
- High resistance of the components most subject to wear ("S" valve, wear plate, compensating ring)
- Declaration of conformity supplied with the user and maintenance manual

## Main options

- Smartronic Advanced:** In addition to the Smartronic Gold functions, provides ASC2.0 stability control, ABC boom oscillation control (Antibouncing), automatic boom opening and closing. Includes radioremot control Hetronic or HBC with display
- Automatic boom opening and closing
- Centralized boom lubrication system
- Concrete shut-off valve
- High pressure water pump 28l / 120 bar
- Radio remote control: Hetronic or HBC equipped with display
- Straight concrete piping on double layer boom with high wear-resistance chromium carbide inserts CIFA LLT Long Life Top
- Wide choice of customer personalization colours
- \*Over 100 options available; details available on truck pumps optional booklet

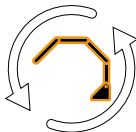
## Distribution boom B7RRZ 67/62



**Advanced  
Stability Control  
2.0**



**Antibouncing**



**Boom Automatic  
Opening and Closing**

Carbon Fiber Video Smartronic Video



CIFA S.p.A. / Via Stati Uniti d'America, 26 / 20030 SENAGO (MI) / ITALY  
Tel. +39 02 990 131 / sales@cifa.com



cifa.com

