

## MK24L

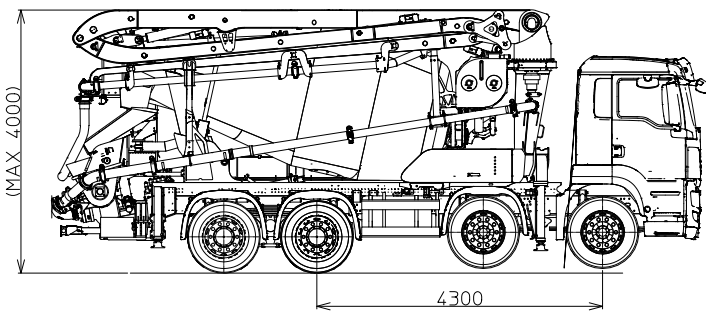
### TRUCK-MIXER PUMP "MAGNUM" MK24L-80

Placing Boom  
Pumping Unit  
Concrete Mixer  
Driven by  
Châssis

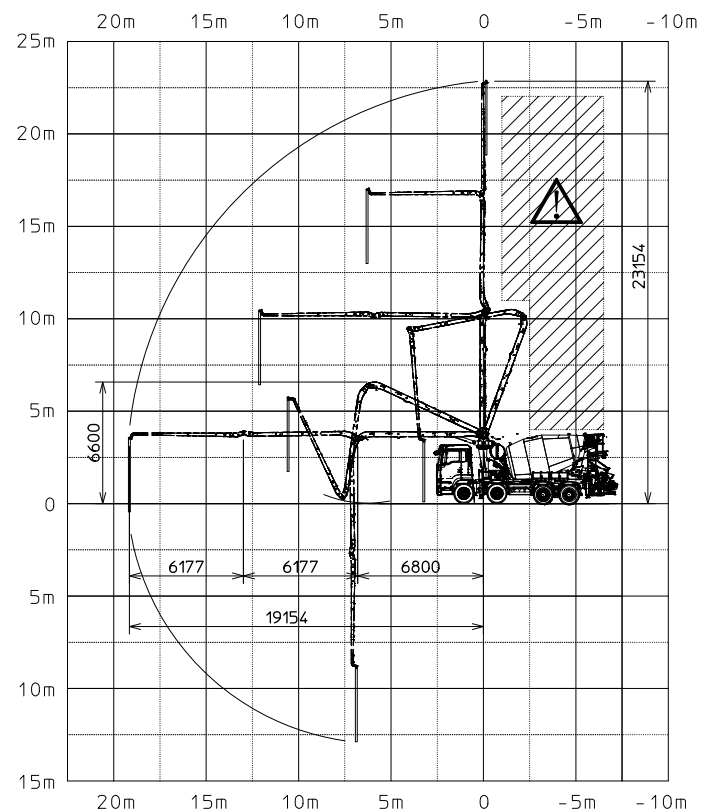
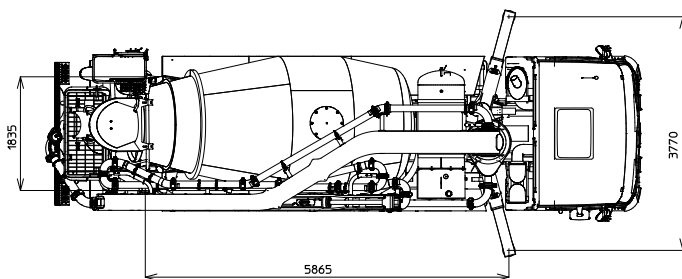
MK24L  
PB 607 S7  
RH 80  
PTO/Gear box by CIFA  
3/4 axles RH 80



#### Dimensions



Dimensions varying according to truck assembly



# MK24L

## TRUCK-MIXER PUMP "MAGNUM" MK24L-80

**Placing Boom  
Pumping Unit  
Concrete Mixer  
Driven by  
Châssis**

MK24L  
PB 607 S7  
RH 80  
PTO/Gear box by CIFA  
3/4 axles RH 80

### Standard equipment

- Compact and harmonic line, studied for advantageous assembling on 3/4 axles (RH 80)
- Ideal loads distribution on the axles to obtain better driving stability
- Self-supporting frame - torsion free FEM designed
- Outriggers fully hydraulic controlled on both machine sides
- High loading and mixing capacity drum and elliptic bottom
- Placing boom MK24L, 3 sections, pipeline diameter 100 mm, "Z" folding system
- Proportional boom control allowing the operator to control more placing boom sections simultaneously
- The "BFC" Best-Flex Cifa supporting system allowing just one man to change delivery pipeline easily, quick and safety
- Concrete flow rate regulator
- Quiet pumping with high performances: smooth, continuous and easy movements
- Safety device on opening inspection hatch
- Two proportional radio control Hetronic with two boom movement speed, synthesiser for automatic frequency search, 8 position joystick and concrete flow rate regulator. 20 mt cable
- Two zinc-coated additional chutes, with supports for their fixing on counterframe
- Remote controlled vibrator on the concrete hopper grid
- Centralized lubrication system for pumping unit
- Automatic lubrication system for pumping pistons by hydraulic oil
- Additional manual lubrication system for pumping unit
- Hard plastic outrigger support plates with relevant housing
- Rear light on hopper
- Polymer rear mono-axle mudguards with rubber mudflaps
- Accessories for cleaning and pipes washing
- Automatic adjustment feeler of truck-mixer discharge into hopper
- Pumping unit with 7 inches "S" shaped valve
- Double thickness concrete pipes, in high resistant steel and insert carbide chrome - CIFA Long Life Pipes
- Long life wear plate and cutting ring with hard carbide inserts

### Control system

- Easytronic:
  - Monitor LCD
  - Dati del tamburo
  - Dati gruppo pompante
  - Contatori ore lavoro
  - Diagnostica

### Main Options

- LSC - Light Stability Control
- HBC Radio remote control, in place of the Hetronic supplied as standard
- Placing boom continuous rotation (not available with LSC)
- 600l capacity pressurized water tank
- High pressure water pump + manual washing gun + cable retractor reel
- "Ekos" dust exhausting device for drum closing
- Concrete shut-off valve
- Aluminum hose/pipe holder on both sides
- Hydraulic pipeline emergency kit

### Concrete Mixer Technical data

Model		80
Nominal capacity	$m^3$	7
Drum geometric volume	$m^3$	12,8
Filling ratio	%	55
Max. drum speed	$1/min$	14
Water tank capacity	$l$	600
Water tank capacity/pressure	$l/min - bar$	230/15
Liter-counter scale	$l$	0-500

### Pumping unit technical data

Model		PB 607 S7
Max. theoretical output	$m^3/h$	61
Max. pressure on concrete	$bar$	71
Max. number of cycles per minute	$n^\circ$	32
Concrete cylinders (diam. x stroke)	$mm$	200x1000
Concrete hopper capacity	$l$	400
"S" valve diameter	"	7

### Placing boom technical data

Model		MK24L
Pipeline diameter	$mm$	100
Max. vertical reach	$m$	23,15
Max. horizontal distance	$m$	19,15
Section numbers		3
1st section opening angle		108°
2nd section opening angle		184°
3rd section opening angle		271°
Rotating angle		+/-240°
End hose length	$m$	4

Technical data and characteristics subject to modifications without notice