

MOVING YOU FURTHER

HX140 L

With Tier 4 final / Stage IV Engine installed



*Photo may include optional equipment.

Net Power

SAE J1349 / 87 kW (116 HP) at 1,950 rpm

Gross Power

SAE J1995 / 92.7 kW (124 HP) at 1,950 rpm

Travel Speed

5.6 km/hr (3.5 mph) / 3.3 km/hr (2.1 mph)

Operating Weight

14,200 kg (31,310 lb)



RULE THE GROUND

The HX Series excavators are products of HHI's spirit of initiative, creativity and strong drive. HHI's engineers, who are the best in the industry, have worked tirelessly to offer a zero-defect product. The new HX Series reflects customers' needs in the field gleaned by thorough monitoring. They maximize fuel efficiency and performance proven by rigorous field tests and quality control.



*Photo may include optional equipment.

RULE THE GROUND

The HX series exceeds customers' expectation!
Become a true leader on the ground with HHI's HX series.

HX140L



WORK MAX, WORTH MAX

- ECO Gauge
- IPC (Intelligent Power Control)
- New Variable Power Control
- Electronic Viscous Fan Clutch
- Attachment Flow Control (Option)
- New Cooling System with Increased Air Flow
- Enlarged Air Inlet with Grill Cover
- Cycle Time Improvement
- Boom Floating Control (Option)



MORE RELIABLE, MORE SUSTAINABLE

- Durable Cooling Module
- Reinforced Pin, Bush and Polymer Shim
- Reinforced Durability of Upper and Lower Structure and Attachments
- Hi-grade (High-pressure) Hoses



INFOTAINMENT FRONTIER

- Intelligent and Wide Cluster
- Haptic Control
- Wi-Fi Direct with Smart Phone (Miracast)
- Proportional Auxiliary Hydraulic System
- New Audio System
- New Air Conditioning System



MODERN COMFORT, SIMPLE AND SAFE SOLUTION

- AAVM (Advanced Around View Monitoring) Camera System (Option)
- Easy Access to DEF/AdBlue® Supply System
- Hi MATE (Remote Management System)
- Swing Lock System (Option)
- Fine Swing Control (Option)



*Photo may include optional equipment.

WORK MAX, WORTH MAX

Fuel Efficient System, Allows Great Performance

The HX Series has an eco-friendly, high-performance engine which ensures both excellent fuel efficiency and high power. With outstanding operating performance proven by rigorous tests at various work sites, it will satisfy any customer's needs.

90%
Reduction in PM & NOx
(Compared to 9 Series)



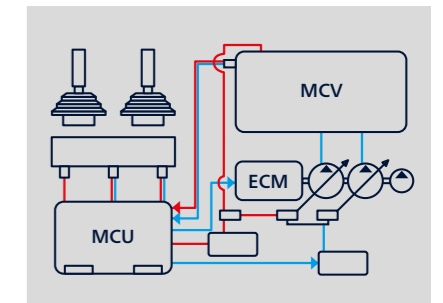
ECO Colored Gauge

ECO Gauge enable economic operation of machines. The gauge level and color displays engine torque and fuel efficiency level. On top of that, the status of fuel consumption such as average rate and the total amount of fuel consumed are displayed. Hourly and daily based fuel consumption can be checked in the detailed menu as well.



IPC (Intelligent Power Control)

The IPC controls power control depending on work environments. Its mode can be selected and released on the monitor. On the excavation mode, pump flow can be easily controlled by a switch valve, reducing fuel consumption.



New Variable Power Control

The HX Series minimizes equipment input and output control signals to improve fuel efficiency. Its three-stage Power mode ensures the highest performance in any operating environment.

- * P (power) mode: Maximizes speed and power of the equipment for heavy load work.
- * S (standard) mode: Optimizes performance and fuel efficiency of the equipment for general load work.
- * E (economy) mode: Improves the control system for light load work.



Attachment Flow Control

The HX Series improves pump flow rate by independent control of two pumps. It optimizes attachments for effective flow rate setting depending on attachments (ten breaker types and ten crusher types), enabling various operations matching the site environments.



New Cooling System with Increased Air Flow

With the three-floor stacked cooling module improving air inflow, the HX Series provides excellent cooling performance by increasing heat dissipation and can be easily cleaned.

Electronic Viscous Fan Clutch

The electronic fan clutch reduces noise during operation by precisely controlling RPM depending on the hydraulic oil and coolant temperature of the working vehicle, and minimizes fuel consumption. It is also possible to shorten the warm up time of hydraulic oil.

Enlarged Air Inlet with Grill Cover

Enlarged vent hole of the air inlet side cover and fine net grill to prevent penetration of foreign materials further improve durability.

*Photo may include optional equipment.



Cycle Time Improvement

The HX Series provides higher productivity on the site by faster operation: it loads trucks up to 5% faster and levels up to 2 ~ 5% faster than the 9 Series.

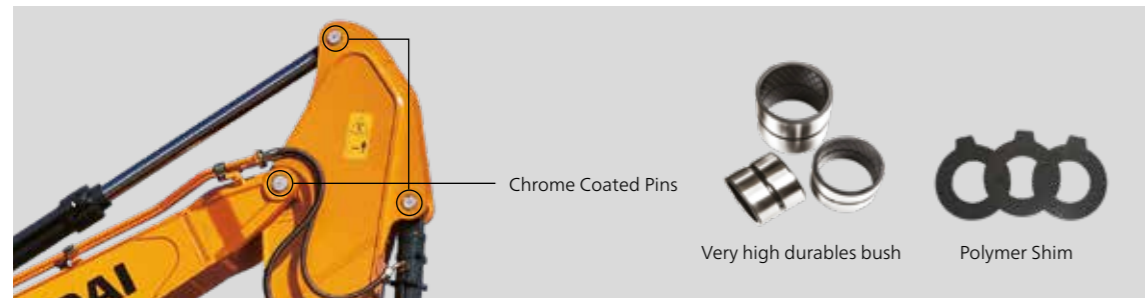
Boom Floating Control (Option)

In order to achieve efficient leveling work by arm-in and arm-out operation with the boom fixed, the HX Series applies boom floating control, allowing stable operation even in high-load work.

MORE RELIABLE, MORE SUSTAINABLE

New Exterior Design for Robustness and Safety

The true value of the HX Series lies in its durability. The robust upper and lower frame structure that can endure external shock and high-load work and the attachments whose performance was proven by rigorous tests further show the real value of the HX Series in tough working environments and promise higher productivity.



Reinforced Pin, Bush and Polymer Shim

The HX series improves lubricity of connecting parts between the equipment and attachments. Gaps with attachments are minimized by wear-resistant long-life pins, bushes and polymer shims, supporting the highest performance with invariable durability.



Durable Cooling Module

The HX series has a durable cooling module that passed stringent tests, demonstrating the highest productivity in tough working environments.



Reinforced Durability of Upper and Lower Structure and Attachments

The upper and lower structure and attachments of the HX Series have higher durability than demanded on the site, as proven through numerous tests including road tests and virtual simulation. The wear resistance of the bucket has been improved by use of new material.



Hi-grade (High-pressure) Hoses

The HX Series uses high-pressure hoses with improved heat and pressure resistance, greatly increasing the durability of the equipment.



*Photo may include optional equipment.

INFOTAINMENT FRONTIER

Enhanced Instrument Panel for Easier Monitoring

Many electronic functions are concentrated on the most convenient spot for operators to ensure work efficiency. The highly-advanced infotainment system, a product of HHI's intensive information technology, enables both productivity and pleasant work at the same time! The HX Series of HHI provides higher value and pleasure to customers.



Intelligent and Wide Cluster

The 8-inch capacitive-type display (like smartphone display) of the HX Series is 30% larger than the previous model, delivering excellent legibility. The centralized switches on the display allow convenience of checking the urea level and temperature outside the cabin. The audio AUX, air conditioner, heater interoperation, wiper, lamps, overload warnings, travel alarm and inclination sensor also maximize operator's convenience.



Haptic Control

The integrated jog shuttle-type haptic controller applies to the accelerator, remote air conditioner controller and operation of the cluster, allowing convenient operation. In the event of failure of the haptic switch, the emergency mode is activated on the cluster to ensure fail-safe function.



New Audio System

Radio player, USB-based MP3 player, integrated Bluetooth hands-free feature, and built-in microphone allow convenient phone calls while in work and in transit. The radio player was moved to the right side from the rear, allowing easier access.

Wi-Fi Direct with Smart Phone (Miracast)

The Miracast system based on Wi-Fi of the operator's smart phone enables easy and convenient use of various features of the smart phone on the big screen including navigation, web surfing, viewing of videos, and listening to music. (For Android mobile phone now)



Proportional Auxiliary Hydraulic System

- Opt: Proportional control switch for better speed control
- Enlarge the operation convenience



New Air Conditioning System

With further improved air conditioning and heating, the HX Series increases the APTC capacity by 15% to provide a pleasant environment for operators all the time. The ventilation was designed such that warm and cool air even reach operators' faces (increasing their work satisfaction) or allowing pleasant working environment.

MODERN COMFORT, SIMPLE AND SAFE SOLUTION

New Cabin for More Comfort

Low noise, low vibration, and ergonomic design make the cabin space more comfortable and pleasant! With focus on safety and convenience of operators, the HX Series allows rapid and safe equipment inspection anytime and anywhere, providing an optimal environment for operators to work.



AAVM (Advanced Around View Monitoring) Camera System (Option)

The HX Series has a state-of-the-art AAVM video camera system to secure field of vision for operators in all directions, thereby preventing accidents. Operators can easily check the workplace in the front, rear and to the right and left.



* AAVM (Advanced Around View Monitoring): Secure field of vision in all directions by nine views including 3D bird's eye view and 2D/4CH view.

* IMOD (Intelligent Moving Object Detection): Inform when people or dangerous objects are detected within the range of operation (recognition distance: 5 m).



Easy Access to DEF/AdBlue® Supply System

The DEF/AdBlue® tank is installed inside the tool box and its inlet is remotely located for easy access and convenient supply. Warning of overflow is given by a red lamp signal. The DEF/AdBlue® supply module is attached on the side of the fuel tank for easy maintenance and filter replacement.



Hi MATE (Remote Management System) (Option)

Hi MATE, Hyundai's proprietary remote management system, provides operators and dealer service personnel access to vital service and diagnostic information on the machine from any computer with internet access. Users can pinpoint machine location using digital mapping and set machine work boundaries, reducing the need for multiple service calls. Hi MATE saves time and money for the owner and dealer by promoting preventative maintenance and reducing machine downtime.

* Operation of the system may be affected by the condition of telecommunication signal



*Photo may include optional equipment.

Swing Lock System (Option)

Swing Lock System is provided to maintain stability when swing movement needs to be limited, improving operating speed and productivity.

Fine Swing Control (Option)

Fine swing control is available for customer's convenience when users want to control fine swing.

SPECIFICATIONS

ENGINE			
Maker / Model	Perkins / 1204F-E44TAN		
Type	4-cycle turbocharged, charge air cooled diesel engine		
Rated flywheel horse power	SAE	J1995 (gross)	92.7 kW (124 HP) at 1,950 rpm
		J1349 (net)	87 kW (116 HP) at 1,950 rpm
	DIN	6271/1 (gross)	92.6 kW (126 PS) at 1,950 rpm
		6271/1 (net)	87 kW (118 PS) at 1,950 rpm
Max. torque	54 kgf-m (391 lbf-ft) at 1,400 rpm		
Bore x stroke	105 x 127 mm (4.13" x 5")		
Piston displacement	4,400 cc (269 cu in)		
Batteries	2 x 12 V x 80 Ah		
Starting motor	24 V - 4.5 kW		
Alternator	24 V - 100 A		

HYDRAULIC SYSTEM	
MAIN PUMP	
Type	Variable displacement tandem axis piston pumps
Max. flow	2 x 126.7 l/min
Sub-pump for pilot circuit	Gear pump
Cross-sensing and fuel saving pump system	

HYDRAULIC MOTORS	
Travel	Two speed axial pistons motor with brake valve and parking brake
Swing	Axial piston motor with automatic brake

RELIEF VALVE SETTING	
Implement circuits	350 kgf/cm ² (4,980 psi)
Travel	350 kgf/cm ² (4,980 psi)
Power boost (boom, arm, bucket)	380 kgf/cm ² (5,400 psi)
Swing circuit	285 kgf/cm ² (4,054 psi)
Pilot circuit	40 kgf/cm ² (570 psi)
Service valve	Installed

HYDRAULIC CYLINDERS	
No. of cylinder	Boom: Ø 105 x 1,075 mm
bore x stroke	Arm: Ø 115 x 1,138 mm
	Bucket: Ø 100 x 800 mm

DRIVES & BRAKES	
Drive method	Fully hydrostatic type
Drive motor	Axial piston motor, in-shoe design
Reduction system	Planetary reduction gear
Max. drawbar pull	12,000 kgf (26,455 lbf)
Max. travel speed (high / low)	5.6 km/hr (3.5 mph) / 3.3 km/hr (2.1 mph)
Gradeability	35° (70%)
Parking brake	Multi wet disc

CONTROL	
Pilot pressure operated joysticks and pedals with detachable lever provide almost effortless and fatigueless operation.	
Pilot control	Two joysticks with one safety lever (LH): Swing and arm (RH): Boom and bucket (ISO)
Traveling and steering	Two levers with pedals
Engine throttle	Electric, Dial type

SWING SYSTEM	
Swing motor	Fixed displacement axial piston motor
Swing reduction	Planetary gear reduction
Swing bearing lubrication	Grease-bathed
Swing brake	Multi wet disc
Swing speed	11.6 rpm

SERVICE REFILL CAPACITIES			
Re-filling	liter	US gal	UK gal
Fuel tank	270.0	71.3	59.4
Engine coolant	15.5	4.1 m	3.4
Engine oil	10.5	2.8	2.3
Swing device	2.5	0.66	0.55
Final drive (each)	2.2	0.60	0.50
Hydraulic system (including tank)	210.0	55.5	46.2
Hydraulic tank	124.0	32.8	27.3
DEF/AdBlue®	19	5	4.2

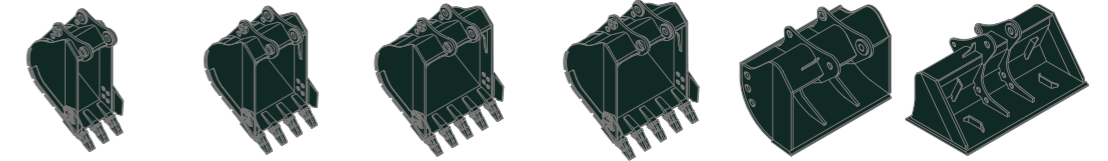
UNDERCARRIAGE	
The X-leg type center frame is integrally welded with reinforced box-section track frames. The undercarriage includes lubricated rollers, idlers, track adjusters with shock absorbing springs and sprockets and a track chain with double or triple grouser shoes.	
Center frame	X - leg type
Track frame	Pentagonal box type
No. of shoes on each side	46 EA / HW version 47 EA
No. of carrier roller on each side	1 EA
No. of track roller on each side	7 EA
No. of rail guard on each side	1 EA

OPERATING WEIGHT (APPROXIMATE)	
Operating weight, including 4,600 mm (15' 1") boom; 2,500 mm (8' 2") arm; SAE heaped 0.58 m ³ (0.76 yd ³) bucket, lubricant, coolant, full fuel tank, full hydraulic tank and all standard equipments.	

OPERATING WEIGHT				
Shoes		Operating weight		Ground pressure
Type	Width mm (in)	kg (lb)		kgf / cm ² (psi)
Triple grouser	500 (20")	HX140L	13,990 (30,840)	0.43 (6.11)
		HX140LD	14,810 (32,650)	0.46 (6.54)
	600 (24")	HX140L	14,200 (31,310)	0.37 (5.26)
		HX140LD	15,020 (33,110)	0.39 (5.55)
Double grouser	700 (28")	HX140L	14,410 (31,770)	0.32 (4.55)
	800 (32")	HX140HW	17,100 (37,700)	0.33 (4.69)
	960 (38")	HX140HW	17,370 (38,290)	0.28 (3.98)

BUCKET SELECTION GUIDE & DIGGING FORCE

BUCKETS



SAE heaped m ³ (yd ³)	0.23 (0.30)	0.40 (0.52)	0.52 (0.68)	0.65 (0.85)	◆ 0.45 (0.59)	◆ 0.55 (0.72)
		0.46 (0.60)	0.58 (0.76)	0.71 (0.93)		

Capacity m ³ (yd ³)	Width mm (in)	Weight kg (lb)	Recommendation mm (ft.in)							
			4,600 (15' 1") Boom				4,100 (13' 5") Boom			
			1,900 (6' 3") Arm	2,100 (6' 11") Arm	2,500 (8' 2") Arm	3,000 (9' 10") Arm	1,900 (6' 3") Arm	2,100 (6' 11") Arm		
0.23 (0.30)	0.20 (0.26)	520 (20.5)	620 (24.4)	335 (740)	●	●	●	■	●	●
0.40 (0.52)	0.35 (0.46)	760 (29.9)	860 (33.9)	410 (900)	●	●	●	■	●	●
0.46 (0.60)	0.40 (0.52)	850 (33.5)	950 (37.4)	435 (960)	●	●	●	▲	●	●
0.52 (0.68)	0.45 (0.59)	935 (36.8)	1,035 (40.8)	460 (1,010)	●	●	●	-	●	●
0.58 (0.76)	0.50 (0.65)	1,030 (40.6)	1,130 (44.5)	480 (1,060)	●	●	■	-	●	●
0.65 (0.85)	0.55 (0.72)	1,110 (43.7)	1,210 (47.6)	500 (1,100)	■	■	▲	-	●	■
0.71 (0.93)	0.60 (0.78)	1,205 (47.4)	-	540 (1,190)	▲	▲	-	-	■	▲
◆ 0.45 (0.59)	0.40 (0.52)	1,520 (59.8)	-	410 (900)	●	●	■	-	●	●
◆ 0.55 (0.72)	0.45 (0.59)	1,800 (70.9)	-	585 (1,290)	■	■	▲	-	●	●

- ◆ Ditching bucket
- ◆ Slope finishing bucket
- : Applicable for materials with density of 2,000 kg/m³ (3,370 lb/yd³) or less
- ⊙ : Applicable for materials with density of 1,600 kg/m³ (2,700 lb/yd³) or less
- : Applicable for materials with density of 1,100 kg/m³ (1,850 lb/yd³) or less

ATTACHMENT

Booms and arms are welded with a low-stress, full-box section design. 4.1 m (13' 5") & 4.6 m (15' 1") Mono-boom and 4.9 m (16' 1") 2-Piece boom and 1.9 m (6' 3"); 2.1 m (6' 11"); 2.5 m (8' 2") & 3.0 m (9' 1") Arms are available.

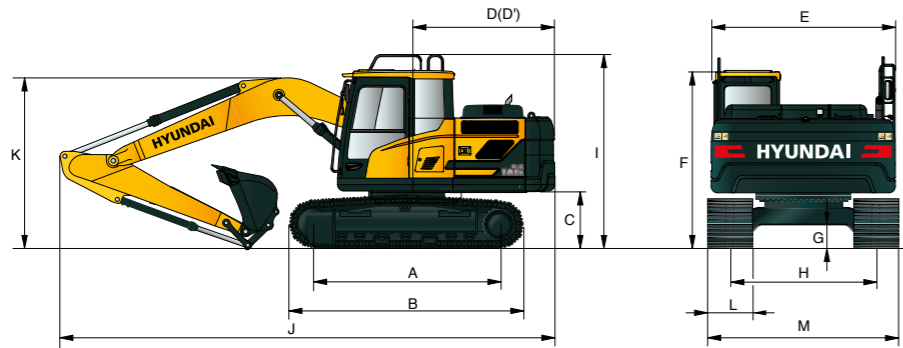
DIGGING FORCE							
Arm	Length	mm (ft.in)	1,900 (6' 3")	2,100 (6' 11")	2,500 (8' 2")	3,000 (9' 10")	Remarks:
	Weight	kg (lb)	560 (1,230)	580 (1,280)	610 (1,340)	670 (1,480)	
Bucket digging force	SAE	kN	87.3 [94.8]	87.3 [94.8]	87.3 [94.8]	87.3 [94.8]	[] : Power Boost
		kgf	8,900 [9,660]	8,900 [9,660]	8,900 [9,660]	8,900 [9,660]	
		lbf	19,620 [21,300]	19,620 [21,300]	19,620 [21,300]	19,620 [21,300]	
	ISO	kN	102 [110.8]	102 [110.8]	102 [110.8]	102 [110.8]	
		kgf	10,400 [11,290]	10,400 [11,290]	10,400 [11,290]	10,400 [11,290]	
		lbf	22,930 [24,890]	22,930 [24,890]	22,930 [24,890]	22,930 [24,890]	
Arm crowd force	SAE	kN	76.5 [83.1]	73.6 [79.9]	62.8 [68.2]	55.9 [60.7]	
		kgf	7,800 [8,470]	7,500 [8,140]	6,400 [6,950]	5,700 [6,190]	
		lbf	17,200 [18,670]	16,530 [17,950]	14,110 [15,320]	12,570 [13,640]	
	ISO	kN	80.4 [87.3]	77.5 [84.1]	65.7 [71.4]	57.9 [62.8]	
		kgf	8,200 [8,900]	7,900 [8,580]	6,700 [7,270]	5,900 [6,410]	
		lbf	18,080 [19,630]	17,420 [18,910]	14,770 [16,040]	13,010 [14,120]	

Note : Arm weight includes bucket cylinder, linkage and pin

DIMENSIONS & WORKING RANGE

HX140 L DIMENSIONS

4.1 m (13' 5") & 4.6 m (15' 1") Mono-boom and 1.9 m (6' 3"); 2.1 m (6' 11"); 2.5 m (8' 2") & 3.0 m (9' 10") Arm.



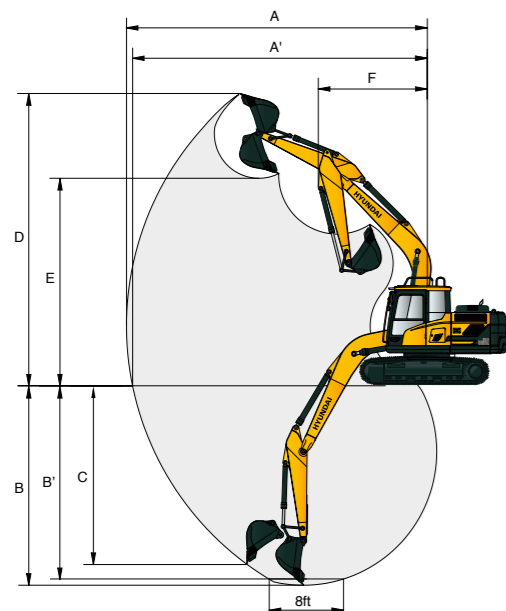
Unit : mm (ft-in)

A	Tumbler distance	3,000 (9' 10")
B	Overall length of crawler	3,708 (12' 2")
C	Ground clearance of counterweight	940 (3' 1")
D	Tail swing radius	2,330 (7' 7")
D'	Rear-end length	2,330 (7' 7")
E	Overall width of upperstructure	2,475 (8' 1")
F	Overall height of cab	2,860 (9' 5")
G	Min. ground clearance	440 (1' 5")
H	Track gauge	2,000 (6' 7")
I	Overall height of guardrail	3,100 (10' 2")

Boom length	4,600 (15' 1")				4,100 (13' 5")	
Arm length	1,900 (6' 3")	2,100 (6' 11")	2,500 (8' 2")	3,000 (9' 10")	1,900 (6' 3")	2,100 (6' 11")
J Overall length	7,820 (25' 7")	7,850 (25' 8")	7,820 (25' 7")	7,790 (25' 6")	7,320 (24' 0")	7,350 (24' 1")
K Overall height of boom	2,650 (8' 7")	2,760 (9' 0")	2,780 (9' 1")	3,110 (10' 2")	2,600 (8' 5")	2,790 (9' 2")
L Track shoe width	500 (20")	600 (24")	600 (24")	700 (28")	700 (28")	700 (28")
M Overall width	2,500 (8' 2")	2,600 (8' 6")	2,600 (8' 6")	2,700 (8' 10")	2,700 (8' 10")	2,700 (8' 10")

HX140 L WORKING RANGE

Unit : mm (ft-in)

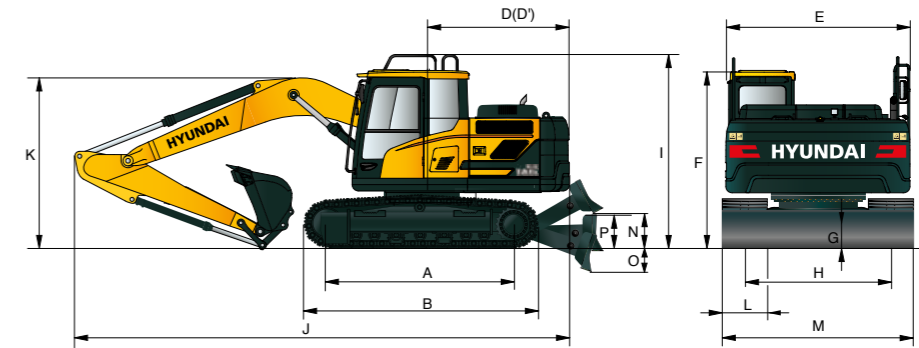


Boom length	4,600 (15' 1")				4,100 (13' 5")	
Arm length	1,900 (6' 3")	2,100 (6' 11")	2,500 (8' 2")	3,000 (9' 10")	1,900 (6' 3")	2,100 (6' 11")
A Max. digging reach	7,750 (25' 5")	7,920 (25' 11")	8,330 (27' 4")	8,790 (28' 10")	7,260 (23' 10")	7,420 (24' 4")
A' Max. digging reach on ground	7,600 (24' 11")	7,770 (25' 6")	8,180 (26' 10")	8,650 (28' 4")	7,090 (23' 3")	7,260 (23' 10")
B Max. digging depth	4,950 (16' 2")	5,150 (16' 10")	5,550 (18' 3")	6,050 (19' 10")	4,540 (14' 11")	4,740 (15' 7")
B' Max. digging depth (8' level)	4,680 (15' 4")	4,900 (16' 1")	5,340 (17' 6")	5,870 (19' 3")	4,280 (14' 1")	4,490 (14' 9")
C Max. vertical wall digging depth	4,650 (15' 3")	4,900 (16' 1")	5,330 (17' 6")	5,850 (19' 2")	4,240 (13' 11")	4,350 (14' 3")
D Max. digging height	8,100 (26' 7")	8,180 (26' 10")	8,500 (27' 11")	8,780 (28' 10")	7,700 (25' 3")	7,770 (25' 6")
E Max. dumping height	5,670 (18' 7")	5,750 (18' 10")	6,060 (19' 11")	6,330 (20' 9")	5,260 (17' 3")	5,340 (17' 6")
F Min. front swing radius	2,630 (8' 8")	2,670 (8' 9")	2,650 (8' 8")	2,680 (8' 10")	2,350 (7' 9")	2,460 (8' 1")

DIMENSIONS & WORKING RANGE

HX140 LD DIMENSIONS

4.1 m (13' 5") & 4.6 m (15' 1") Mono-boom and 1.9 m (6' 3"); 2.1 m (6' 11"); 2.5 m (8' 2") & 3.0 m (9' 10") Arm.



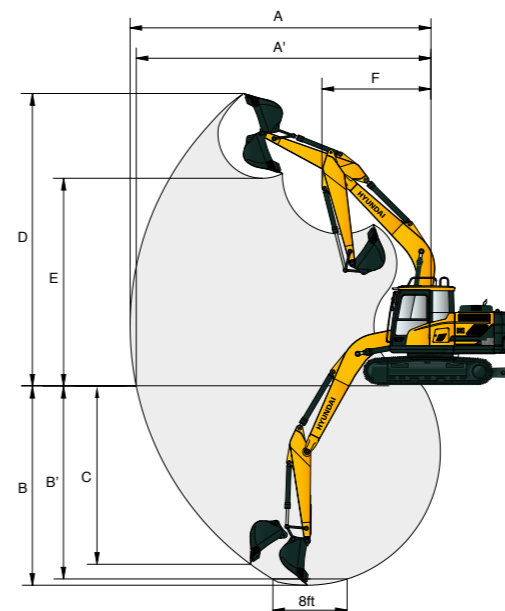
Unit : mm (ft-in)

A	Tumbler distance	3,000 (9' 10")
B	Overall length of crawler	3,708 (12' 2")
C	Ground clearance of counterweight	940 (3' 1")
D	Tail swing radius	2,330 (7' 7")
D'	Rear-end length	2,330 (7' 7")
E	Overall width of upperstructure	2,475 (8' 1")
F	Overall height of cab	2,960 (9' 9")
G	Min. ground clearance	440 (1' 5")
H	Track gauge	2,000 (6' 7")
I	Overall height of guardrail	3,180 (10' 5")
N	Ground clearance of Dozer blade up	560 (1' 10")
O	Depth of dozer blade down	500 (1' 8")
P	Height of dozer blade	575 (1' 11")

Boom length	4,600 (15' 1")				4,100 (13' 5")	
Arm length	1,900 (6' 3")	2,100 (6' 11")	2,500 (8' 2")	3,000 (9' 10")	1,900 (6' 3")	2,100 (6' 11")
J Overall length	8,130 (26' 7")	8,160 (26' 7")	8,130 (26' 7")	8,100 (26' 6")	7,630 (25' 0")	7,660 (25' 1")
K Overall height of boom	2,650 (8' 7")	2,760 (9' 0")	2,780 (9' 1")	3,110 (10' 2")	2,600 (8' 5")	2,790 (9' 2")
L Track shoe width	500 (20")	600 (24")	600 (24")	700 (28")	700 (28")	700 (28")
M Overall width	2,500 (8' 2")	2,600 (8' 6")	2,600 (8' 6")	2,700 (8' 10")	2,700 (8' 10")	2,700 (8' 10")

HX140 LD WORKING RANGE

Unit : mm (ft-in)

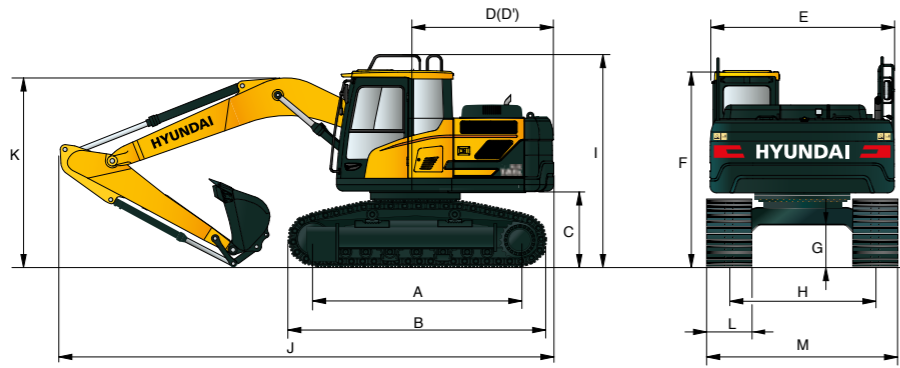


Boom length	4,600 (15' 1")				4,100 (13' 5")	
Arm length	1,900 (6' 3")	2,100 (6' 11")	2,500 (8' 2")	3,000 (9' 10")	1,900 (6' 3")	2,100 (6' 11")
A Max. digging reach	7,750 (25' 5")	7,920 (25' 11")	8,330 (27' 4")	8,790 (28' 10")	7,260 (23' 10")	7,420 (24' 4")
A' Max. digging reach on ground	7,600 (24' 11")	7,770 (25' 6")	8,180 (26' 10")	8,650 (28' 4")	7,090 (23' 3")	7,260 (23' 10")
B Max. digging depth	4,950 (16' 2")	5,150 (16' 10")	5,550 (18' 3")	6,050 (19' 10")	4,540 (14' 11")	4,740 (15' 7")
B' Max. digging depth (8' level)	4,680 (15' 4")	4,900 (16' 1")	5,340 (17' 6")	5,870 (19' 3")	4,280 (14' 1")	4,490 (14' 9")
C Max. vertical wall digging depth	4,650 (15' 3")	4,900 (16' 1")	5,330 (17' 6")	5,850 (19' 2")	4,240 (13' 11")	4,350 (14' 3")
D Max. digging height	8,100 (26' 7")	8,180 (26' 10")	8,500 (27' 11")	8,780 (28' 10")	7,700 (25' 3")	7,770 (25' 6")
E Max. dumping height	5,670 (18' 7")	5,750 (18' 10")	6,060 (19' 11")	6,330 (20' 9")	5,260 (17' 3")	5,340 (17' 6")
F Min. front swing radius	2,630 (8' 8")	2,670 (8' 9")	2,650 (8' 8")	2,680 (8' 10")	2,350 (7' 9")	2,460 (8' 1")

DIMENSIONS & WORKING RANGE

HX140 HW DIMENSIONS

4.1 m (13' 5") & 4.6 m (15' 1") Mono-boom and 1.9 m (6' 3"); 2.1 m (6' 11"); 2.5 m (8' 2") & 3.0 m (9' 10") Arm.



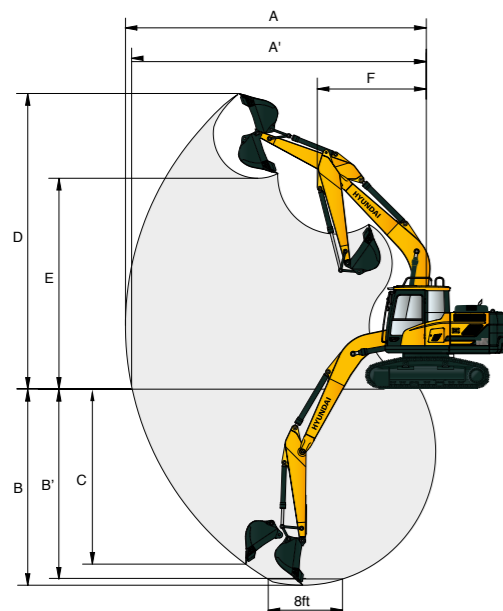
Unit : mm (ft-in)

A	Tumbler distance	3,030 (9' 11")
B	Overall length of crawler	3,740 (12' 3")
C	Ground clearance of counterweight	1,200 (3' 11")
D	Tail swing radius	2,330 (7' 7")
D'	Rear-end length	2,330 (7' 7")
E	Overall width of upperstructure	2,475 (8' 1")
F	Overall height of cab	3,220 (10' 7")
G	Min. ground clearance	600 (1' 12")
H	Track gauge	2,040 (6' 8")
I	Overall height of guardrail	3,440 (11' 3")

Boom length	4,600 (15' 1")				4,100 (13' 5")		
Arm length	1,900 (6' 3")	2,100 (6' 11")	2,500 (8' 2")	3,000 (9' 10")	1,900 (6' 3")	2,100 (6' 11")	
J	Overall length	7,770 (25' 5")	7,830 (25' 7")	7,790 (25' 6")	7,860 (25' 8")	7,220 (23' 8")	7,290 (23' 11")
K	Overall height of boom	2,750 (9' 0")	2,860 (9' 4")	2,830 (9' 3")	3,120 (10' 2")	2,650 (8' 1")	2,850 (9' 4")
L	Track shoe width	700 (28")	800 (32")		960 (38")		
M	Overall width	2,740 (8' 12")	2,840 (9' 4")		3,000 (9' 10")		

HX140 HW WORKING RANGE

Unit : mm (ft-in)

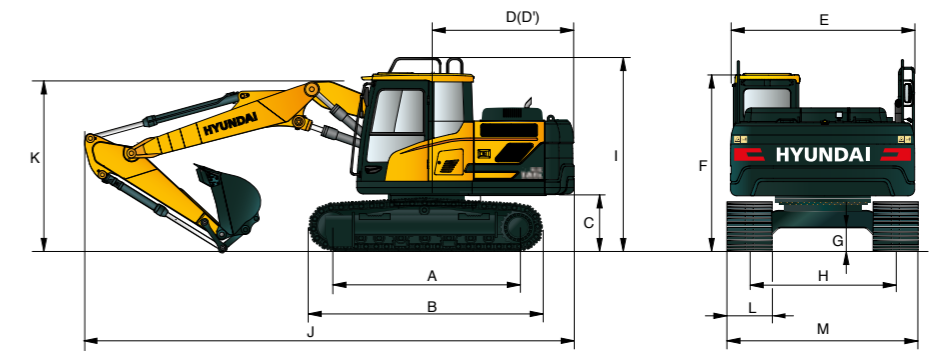


Boom length	4,600 (15' 1")				4,100 (13' 5")		
Arm length	1,900 (6' 3")	2,100 (6' 11")	2,500 (8' 2")	3,000 (9' 10")	1,900 (6' 3")	2,100 (6' 11")	
A	Max. digging reach	7,750 (25' 5")	7,920 (25' 11")	8,330 (27' 4")	8,790 (28' 10")	7,260 (23' 10")	7,420 (24' 4")
A'	Max. digging reach on ground	7,540 (24' 9")	7,710 (25' 4")	8,110 (26' 7")	8,580 (28' 2")	7,020 (23' 10")	7,200 (23' 7")
B	Max. digging depth	4,690 (15' 5")	4,890 (16' 1")	5,290 (17' 4")	5,790 (19' 0")	4,280 (14' 1")	4,480 (14' 8")
B'	Max. digging depth (8' level)	4,420 (14' 6")	4,640 (15' 3")	5,080 (16' 8")	5,610 (18' 5")	4,020 (13' 2")	4,230 (13' 11")
C	Max. vertical wall digging depth	4,390 (14' 5")	4,640 (15' 3")	5,070 (16' 8")	5,590 (18' 4")	3,980 (13' 1")	4,090 (13' 5")
D	Max. digging height	8,360 (27' 5")	8,440 (27' 8")	8,760 (28' 9")	9,040 (29' 7")	7,960 (26' 1")	8,030 (26' 4")
E	Max. dumping height	5,930 (19' 5")	6,010 (19' 8")	6,320 (20' 9")	6,590 (21' 7")	5,520 (18' 1")	5,600 (18' 4")
F	Min. front swing radius	2,630 (8' 8")	2,670 (8' 9")	2,650 (8' 8")	2,680 (8' 10")	2,350 (7' 9")	2,460 (8' 1")

DIMENSIONS & WORKING RANGE

HX140 L 2-PIECE BOOM DIMENSIONS

4.9 m (16' 1") 2-Piece boom and 1.9 m (6' 3"); 2.1 m (6' 11"); 2.5 m (8' 2") & 3.0 m (9' 10") Arm.



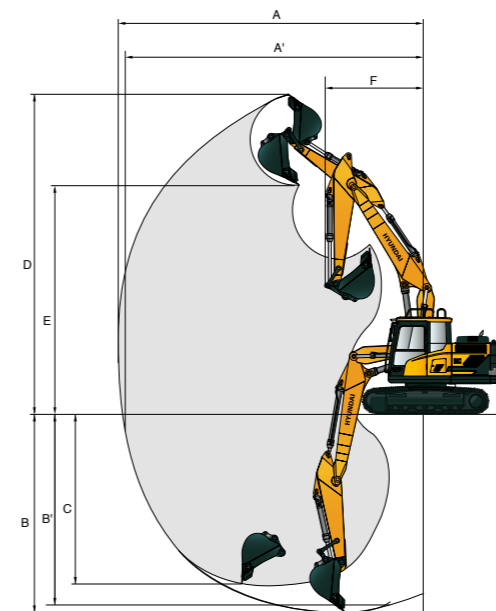
Unit : mm (ft-in)

A	Tumbler distance	3,000 (9' 10")
B	Overall length of crawler	3,750 (12' 4")
C	Ground clearance of counterweight	940 (3' 1")
D	Tail swing radius	2,330 (7' 7")
D'	Rear-end length	2,330 (7' 7")
E	Overall width of upperstructure	2,500 (8' 2")
F	Overall height of cab	2,870 (9' 4")
G	Min. ground clearance	440 (1' 5")
H	Track gauge	2,000 (6' 7")
I	Overall height of guardrail	3,100 (10' 2")

Boom length	4,900 (16' 1") 2-Piece boom			
Arm length	1,900 (6' 3")	2,100 (6' 11")	2,500 (8' 2")	
J	Overall length	8,160 (26' 8")	8,170 (26' 8")	8,150 (26' 8")
K	Overall height of boom	2,830 (9' 3")	2,940 (9' 6")	2,960 (9' 7")
L	Track shoe width	500 (20")	600 (24")	700 (28")
M	Overall width	2,500 (8' 2")	2,600 (8' 6")	2,700 (8' 10")

HX140 L 2-PIECE BOOM WORKING RANGE

Unit : mm (ft-in)



Boom length	4,900 (16' 1") 2-Piece boom			
Arm length	1,900 (6' 3")	2,100 (6' 11")	2,500 (8' 2")	
A	Max. digging reach	8,140 (26' 8")	8,320 (27' 4")	8,720 (28' 7")
A'	Max. digging reach on ground	8,000 (26' 3")	8,180 (26' 10")	8,590 (28' 2")
B	Max. digging depth	5,110 (16' 9")	5,310 (17' 5")	5,710 (18' 9")
B'	Max. digging depth (8' level)	5,000 (16' 5")	5,190 (17' 0")	5,610 (18' 5")
C	Max. vertical wall digging depth	4,490 (14' 9")	4,660 (15' 3")	5,120 (16' 10")
D	Max. digging height	8,810 (28' 11")	8,890 (29' 2")	9,270 (30' 5")
E	Max. dumping height	6,330 (20' 9")	6,410 (21' 0")	6,780 (22' 3")
F	Min. front swing radius	2,670 (8' 9")	2,830 (9' 3")	2,690 (8' 10")

LIFTING CAPACITY

Rating over-front Rating over-side or 360 degrees

HX140 L

Boom: 4.6 m (15' 1") / Arm: 1.9 m (6' 3") / Bucket: 0.58 m³ (0.76 yd³) SAE heaped / Shoe: 600 mm (24") triple grouser

Load point height m (ft)	Load radius								At max. reach		
	1.5 m (5 ft)		3.0 m (10 ft)		4.5 m (15 ft)		6.0 m (20 ft)		Capacity	Reach	
6.0 m (20 ft)	kg			*3340	*3340				*3170	2350	5.95
	lb			*7360	*7360				*6990	5180	(19.5)
4.5 m (15 ft)	kg			*3550	*3550				2820	1760	6.90
	lb			*7830	*7830				6220	3880	(22.6)
3.0 m (10 ft)	kg		*6270	*6270	*4440	3510	3480	2170	2480	1520	7.37
	lb		*13820	*13820	*9790	7740	7670	4780	5470	3350	(24.2)
1.5 m (5 ft)	kg		*8490	6040	5400	3270	3380	2080	2390	1450	7.45
	lb		*18720	13320	11900	7210	7450	4590	5270	3200	(24.4)
Ground Line	kg		*8230	5790	5200	3100	3300	2000	2510	1520	7.17
	lb		*18140	12760	11460	6830	7280	4410	5530	3350	(23.5)
-1.5 m (-5 ft)	kg	*6670	*6670	*9690	5800	5140	3050		2960	1810	6.48
	lb	*14700	*14700	*21360	12790	11330	6720		6530	3990	(21.3)
-3.0 m (-10 ft)	kg	*10970	*10970	*8330	5930	5220	3110		*3690	2670	5.15
	lb	*24180	*24180	*18360	13070	11510	6860		*8140	5890	(16.9)

Boom: 4.6 m (15' 1") / Arm: 2.5 m (8' 2") / Bucket: 0.58 m³ (0.76 yd³) SAE heaped / Shoe: 600 mm (24") triple grouser

Load point height m (ft)	Load radius								At max. reach		
	1.5 m (5 ft)		3.0 m (10 ft)		4.5 m (15 ft)		6.0 m (20 ft)		Capacity	Reach	
6.0 m (20 ft)	kg								*2810	1920	6.69
	lb								*6190	4230	(21.9)
4.5 m (15 ft)	kg					*2770	2270		2440	1500	7.53
	lb					*6110	5000		5380	3310	(24.7)
3.0 m (10 ft)	kg		*4930	*4930	*3830	3570	*3380	2190	2170	1310	7.95
	lb		*10870	*10870	*8440	7870	*7450	4830	4780	2890	(26.1)
1.5 m (5 ft)	kg		*8030	6240	*5010	3300	3380	2070	2100	1250	8.03
	lb		*17700	13760	*11050	7280	7450	4560	4630	2760	(26.3)
Ground Line	kg		*8780	5800	5200	3090	3270	1970	2180	1300	7.77
	lb		*19360	12790	11460	6810	7210	4340	4810	2870	(25.5)
-1.5 m (-5 ft)	kg	*5740	*5740	*9910	5700	5080	2990	3220	2500	1500	7.15
	lb	*12650	*12650	*21850	12570	11200	6590	7100	5510	3310	(23.5)
-3.0 m (-10 ft)	kg	*8760	*8760	*9040	5770	5100	3000		3340	2030	6.01
	lb	*19310	*19310	*19930	12720	11240	6610		7360	4480	(19.7)
-4.5 m (-15 ft)	kg			*6590	6030						
	lb			*14530	13290						

Boom: 4.6 m (15' 1") / Arm: 3.0 m (9' 10") / Bucket: 0.58 m³ (0.76 yd³) SAE heaped / Shoe: 600 mm (24") triple grouser

Load point height m (ft)	Load radius										At max. reach		
	1.5 m (5 ft)		3.0 m (10 ft)		4.5 m (15 ft)		6.0 m (20 ft)		7.5 m (25 ft)		Capacity	Reach	
6.0 m (20 ft)	kg										*2540	1650	7.25
	lb										*5600	3640	(23.8)
4.5 m (15 ft)	kg					*2570	2310				2180	1320	8.02
	lb					*5670	5090				4810	2910	(26.3)
3.0 m (10 ft)	kg				*3280	*3280	*3020	2210	*1660	1430	1960	1160	8.41
	lb				*7230	*7230	*6660	4870	*3660	3150	4320	2560	(27.6)
1.5 m (5 ft)	kg		*6980	6440	*4540	3350	3400	2080	*2190	1380	1890	1100	8.49
	lb		*15390	14200	*10010	7390	7500	4590	*4830	3040	4170	2430	(27.9)
Ground Line	kg		*9240	5850	5210	3100	3260	1960	*2120	1330	1960	1140	8.25
	lb		*20370	12900	11490	6830	7190	4320	*4670	2930	4320	2510	(27.1)
-1.5 m (-5 ft)	kg	*5290	*5290	*9910	5650	5060	2960	3180	1890		2200	1290	7.67
	lb	*11660	*11660	*21850	12460	11160	6530	7010	4170		4850	2840	(25.2)
-3.0 m (-10 ft)	kg	*7720	*7720	*9440	5670	5030	2940	3180	1880		2800	1680	6.64
	lb	*17020	*17020	*20810	12500	11090	6480	7010	4140		6170	3700	(21.8)
-4.5 m (-15 ft)	kg	*11300	*11300	*7670	5850	*4890	3050						
	lb	*24910	*24910	*16910	12900	*10780	6720						

1. Lifting capacity are based on SAE J1097 and ISO 10567.
2. Lifting capacity of the HX series does not exceed 75% of tipping load with the machine on firm, level ground or 87% of full hydraulic capacity.

3. The load point is a hook located on the back of the bucket.
4. (*) indicates load limited by hydraulic capacity.

LIFTING CAPACITY

Rating over-front Rating over-side or 360 degrees

HX140 LD

Boom: 4.6 m (15' 1") / Arm: 1.9 m (6' 3") / Bucket: 0.58 m³ (0.76 yd³) SAE heaped / Shoe: 600 mm (24") triple grouser

Load point height m (ft)	Load radius								At max. reach			
	1.5 m (5 ft)		3.0 m (10 ft)		4.5 m (15 ft)		6.0 m (20 ft)		Capacity	Reach		
6.0 m (20 ft)	kg					*3340	*3340		*3170	2490	5.95	
	lb					*7360	*7360		*6990	5490	(19.5)	
4.5 m (15 ft)	kg					*3550	*3550		3070	1870	6.90	
	lb					*7830	*7830		6770	4120	(22.6)	
3.0 m (10 ft)	kg			*6270	*6270	*4440	3700	3780	2300	2710	1620	7.37
	lb			*13820	*13820	*9790	8160	8330	5070	5970	3570	(24.2)
1.5 m (5 ft)	kg			*8490	6380	*5520	3460	3680	2210	2610	1550	7.45
	lb			*18720	14070	*12170	7630	8110	4870	5750	3420	(24.4)
Ground Line	kg			*8230	6130	5650	3290	3590	2130	2750	1630	7.17
	lb			*18140	13510	12460	7250	7910	4700	6060	3590	(23.5)
-1.5 m (-5 ft)	kg	*6670	*6670	*9690	6140	5590	3240		3230	1930	6.48	
	lb	*14700	*14700	*21360	13540	12320	7140		7120	4250	(21.3)	
-3.0 m (-10 ft)	kg	*10970	*10970	*8330	6270	*5520	3300		*3690	2830	5.15	
	lb	*24180	*24180	*18360	13820	*12170	7280		*8140	6240	(16.9)	

Boom: 4.6 m (15' 1") / Arm: 2.5 m (8' 2") / Bucket: 0.58 m³ (0.76 yd³) SAE heaped / Shoe: 600 mm (24") triple grouser

Load point height m (ft)	Load radius								At max. reach			
	1.5 m (5 ft)		3.0 m (10 ft)		4.5 m (15 ft)		6.0 m (20 ft)		Capacity	Reach		
6.0 m (20 ft)	kg								*2810	2040	6.69	
	lb								*6190	4500	(21.9)	
4.5 m (15 ft)	kg					*2770	2410		2660	1600	7.53	
	lb					*6110	5310		5860	3530	(24.7)	
3.0 m (10 ft)	kg			*4930	*4930	*3830	3770	*3380	2320	2380	1400	7.95
	lb			*10870	*10870	*8440	8310	*7450	5110	5250	3090	(26.1)
1.5 m (5 ft)	kg			*8030	6580	*5010	3490	3680	2210	2300	1340	8.03
	lb			*17700	14510	*11050	7690	8110	4870	5070	2950	(26.3)
Ground Line	kg			*8780	6140	5640	3280	3570	2110	2400	1400	7.77
	lb			*19360	13540	12430	7230	7870	4650	5290	3090	(25.5)
-1.5 m (-5 ft)	kg	*5740	*5740	*9910	6040	5530	3180	3510	2060	2730	1610	7.15
	lb	*12650	*12650	*21850	13320	12190	7010	7740	4540	6020	3550	(23.5)
-3.0 m (-10 ft)	kg	*8760	*8760	*9040	6110	5550	3200		*3540	2170	6.01	
	lb	*19310	*19310	*19930	13470	12240	7050		*7800	4780	(19.7)	
-4.5 m (-15 ft)	kg			*6590	6370							
	lb			*14530	14040							

Boom: 4.6 m (15' 1") / Arm: 3.0 m (9' 10") / Bucket: 0.58 m³ (0.76 yd³) SAE heaped / Shoe: 600 mm (24") triple grouser

Load point height m (ft)	Load radius										At max. reach		
	1.5 m (5 ft)		3.0 m (10 ft)		4.5 m (15 ft)		6.0 m (20 ft)		7.5 m (25 ft)		Capacity	Reach	
6.0 m (20 ft)	kg							*1880	*1880		*2540	1760	7.25
	lb												

LIFTING CAPACITY

Rating over-front Rating over-side or 360 degrees

HX140 HW

Boom: 4.6 m (15' 1") / Arm: 1.9 m (6' 3") / Bucket: 0.58 m³ (0.76 yd³) SAE heaped / Shoe: 800 mm (32") triple grouser

Load point height m (ft)	Load radius								At max. reach		
	1.5 m (5 ft)		3.0 m (10 ft)		4.5 m (15 ft)		6.0 m (20 ft)		Capacity		Reach m (ft)
6.0 m (20 ft)	kg				*3310	*3310			*3180	2610	6.16
	lb				*7300	*7300			*7010	5750	(20.2)
4.5 m (15 ft)	kg				*3670	*3670	*2830	2640	3200	2050	7.01
	lb				*8090	*8090	*6240	5820	7050	4520	(23.0)
3.0 m (10 ft)	kg		*6820	*6820	*4620	4090	*3860	2580	2880	1820	7.41
	lb		*15040	*15040	*10190	9020	*8510	5690	6350	4010	(24.3)
1.5 m (5 ft)	kg		*7800	7120	*5680	3850	3930	2480	2820	1770	7.43
	lb		*17200	15700	*12520	8490	8660	5470	6220	3900	(24.4)
Ground Line	kg		*8700	6940	6050	3700	3850	2410	3020	1890	7.09
	lb		*19180	15300	13340	8160	8490	5310	6660	4170	(23.3)
-1.5 m (-5 ft)	kg	*7330	*7330	*9540	6960	6010	3670		3630	2290	6.31
	lb	*16160	*16160	*21030	15340	13250	8090		8000	5050	(20.7)
-3.0 m (-10 ft)	kg			*7950	7130	*5200	3760				
	lb			*17530	15720	*11460	8290				

Boom: 4.6 m (15' 1") / Arm: 2.5 m (8' 2") / Bucket: 0.58 m³ (0.76 yd³) SAE heaped / Shoe: 800 mm (32") triple grouser

Load point height m (ft)	Load radius								At max. reach		
	1.5 m (5 ft)		3.0 m (10 ft)		4.5 m (15 ft)		6.0 m (20 ft)		Capacity		Reach m (ft)
6.0 m (20 ft)	kg								*2830	2180	6.87
	lb								*6240	4810	(22.5)
4.5 m (15 ft)	kg				*3040	*3040	*2930	2690	2790	1770	7.63
	lb				*6700	*6700	*6460	5930	6150	3900	(25.0)
3.0 m (10 ft)	kg		*5460	*5460	*4030	*4030	*3470	2590	2540	1590	7.99
	lb		*12040	*12040	*8880	*8880	*7650	5710	5600	3510	(26.2)
1.5 m (5 ft)	kg		*8460	7290	*5200	3880	3930	2480	2490	1540	8.01
	lb		*18650	16070	*11460	8550	8660	5470	5490	3400	(26.3)
Ground Line	kg	*3600	*3600	*8880	6920	6030	3680	3820	2380	1630	7.70
	lb	*7940	*7940	*19580	15260	13290	8110	8420	5250	3590	(25.3)
-1.5 m (-5 ft)	kg	*6200	*6200	*9840	6850	5940	3600	3780	2340	1900	7.00
	lb	*13670	*13670	*21690	15100	13100	7940	8330	5160	4190	(23.0)
-3.0 m (-10 ft)	kg	*9390	*9390	*8770	6960	*5760	3640		*3520	2650	5.74
	lb	*20700	*20700	*19330	15340	*12700	8020		*7760	5840	(18.8)

Boom: 4.6 m (15' 1") / Arm: 3.0 m (9' 10") / Bucket: 0.58 m³ (0.76 yd³) SAE heaped / Shoe: 800 mm (32") triple grouser

Load point height m (ft)	Load radius										At max. reach			
	1.5 m (5 ft)		3.0 m (10 ft)		4.5 m (15 ft)		6.0 m (20 ft)		7.5 m (25 ft)		Capacity		Reach m (ft)	
6.0 m (20 ft)	kg											*2550	1900	7.41
	lb											*5620	4190	(24.3)
4.5 m (15 ft)	kg					*2660	*2660					2510	1570	8.11
	lb					*5860	*5860					5530	3460	(26.6)
3.0 m (10 ft)	kg				*3480	*3480	*3120	2610	*1790	1740		2300	1420	8.45
	lb				*7670	*7670	*6880	5750	*3950	3840		5070	3130	(27.7)
1.5 m (5 ft)	kg		*7490	7480	*4750	3920	*3710	2480	*2230	1690		2250	1380	8.47
	lb		*16510	16490	*10470	8640	*8180	5470	*4920	3730		4960	3040	(27.8)
Ground Line	kg	*3650	*3650	*9450	6950	*5770	3680	3810	2360	*1990	1640	2360	1440	8.18
	lb	*8050	*8050	*20830	15320	*12720	8110	8400	5200	*4390	3620	5200	3170	(26.8)
-1.5 m (-5 ft)	kg	*5660	*5660	*9900	6800	5900	3560	3740	2300			2680	1650	7.53
	lb	*12480	*12480	*21830	14990	13010	7850	8250	5070			5910	3640	(24.7)
-3.0 m (-10 ft)	kg	*8220	*8220	*9250	6840	5900	3560	3760	2320			*3380	2180	6.40
	lb	*18120	*18120	*20390	15080	13010	7850	8290	5110			*7450	4810	(21.0)
-4.5 m (-15 ft)	kg			*7160	7060	*4420	3710							
	lb			*15790	15560	*9740	8180							

- Lifting capacity are based on SAE J1097 and ISO 10567.
- Lifting capacity of the HX series does not exceed 75% of tipping load with the machine on firm, level ground or 87% of full hydraulic capacity.

- The load point is a hook located on the back of the bucket.
- (*) indicates load limited by hydraulic capacity.

LIFTING CAPACITY

Rating over-front Rating over-side or 360 degrees

HX140 2-PIECE BOOM

Boom: 4.9 m (16' 1") / Arm: 1.9 m (6' 3") / Bucket: 0.58 m³ (0.76 yd³) SAE heaped / Shoe: 600 mm (24") triple grouser

Load point height m (ft)	Load radius						At max. reach				
	3.0 m (10 ft)		4.5 m (15 ft)		6.0 m (20 ft)		Capacity		Reach m (ft)		
6.0 m (20 ft)	kg				*2900	*2900			*2880	2010	6.45
	lb				*6390	*6390			*6350	4430	(21.2)
4.5 m (15 ft)	kg				*3280	*3280	*3150	2220	2530	1540	7.33
	lb				*7230	*7230	*6940	4890	5580	3400	(24.0)
3.0 m (10 ft)	kg	*6420	*6420	*4230	3440	*3470	2130	2240	2240	1340	7.76
	lb	*14150	*14150	*9330	7580	*7650	4700	4940	4940	2950	(25.5)
1.5 m (5 ft)	kg			5310	3160	3340	2020	2170	1280		7.84
	lb			11710	6970	7360	4450	4780	2820		(25.7)
Ground Line	kg	*5430	*5430	5110	2980	3240	1930	2270	1340		7.58
	lb	*11970	*11970	11270	6570	7140	4250	5000	2950		(24.9)
-1.5 m (-5 ft)	kg	*9210	5620	5050	2940	3220	1900	2630	1570		6.93
	lb	*20300	12390	11130	6480	7100	4190	5800	3460		(22.7)
-3.0 m (-10 ft)	kg	*8450	5780	5130	3000						
	lb	*18630	12740	11310	6610						

Boom: 4.9 m (16' 1") / Arm: 2.1 m (6' 11") / Bucket: 0.58 m³ (0.76 yd³) SAE heaped / Shoe: 600 mm (24") triple grouser

Load point height m (ft)	Load radius						At max. reach				
	3.0 m (10 ft)		4.5 m (15 ft)		6.0 m (20 ft)		Capacity		Reach m (ft)		
6.0 m (20 ft)	kg				*2690	*2690			*2760	1900	6.68
	lb				*5930	*5930			*6080	4190	(21.9)
4.5 m (15 ft)	kg				*3080	*3080	*2990	2230	2420	1470	7.52
	lb				*6790	*6790	*6590	4920	5340	3240	(24.7)
3.0 m (10 ft)	kg	*5930	*5930	*4030	3460	*3360	2140	2150	1280		7.94
	lb	*13070	*13070	*8880	7630	*7410	4720	4740	2820		(26.0)
1.5 m (5 ft)	kg			*5140	3160	3340	2010	2080	1220		8.02
	lb			*11330	6970	7360	4430	4590	2690		(26.3)
Ground Line	kg	*5690	5540	5090	2960	3230	1910	2170	1270		7.77
	lb	*12540	12210	11220	6530	7120	4210	4780	2800		(25.5)
-1.5 m (-5 ft)	kg	*8930	5560	5020	2900	3190	1870	2490	1470		7.14
	lb	*19690	12260	11070	6390	7030	4120	5490	3240		(23.4)
-3.0 m (-10 ft)	kg	*8650	5690	5070	2950						
	lb	*19070	12540	11180	6500						

Boom: 4.9 m (16' 1") / Arm: 2.5 m (8' 2") / Bucket: 0.58 m³ (0.76 yd³) SAE heaped / Shoe: 600 mm (24") triple grouser

Load point height m (ft)	Load radius										At max. reach				
	1.5 m (5 ft)		3.0 m (10 ft)		4.5 m (15 ft)		6.0 m (20 ft)		7.5 m (25 ft)		Capacity		Reach m (ft)		
6.0 m (20 ft)	kg											*2570	1660	7.18	
	lb											*5670	3660	(23.6)	
4.5 m (15 ft)	kg					*2700	*2700	*2710	2270			2190	1310	7.96	
	lb					*5950	*5950	*5970	5000			4830	2890	(26.1)	
3.0 m (10 ft)	kg				*5070	*5070	*3660	3520	*3120	2160	*1900	1400	1970	1150	8.35
	lb				*11180	*11									

ENGINE	STD	OPT
Perkins / 1204F-E44TAN engine	●	
HYDRAULIC SYSTEM		
Intelligent Power Control (IPC)		
3-power mode, 2-work mode, user mode	●	
Variable Power Control	●	
Pump Flow Control	●	
Attachment Mode Flow Control		●
Engine Auto Idle	●	
Engine Auto Shutdown Control		●
Electronic Fan Control	●	
CABIN & INTERIOR		
ISO Standard cabin		
Rise-up type windshield wiper	●	
Radio / USB player	●	
Handsfree mobile phone system with USB	●	
12 volt power outlet (24V DC to 12V DC converter)	●	
Electric horn	●	
All-weather steel cab with 360° visibility	●	
Safety glass windows	●	
Sliding fold-in front window	●	
Sliding side window (LH)	●	
Lockable door	●	
Hot & cool box	●	
Storage compartment & Ashtray	●	
Transparent cabin roof-cover	●	
Sun visor	●	
Door and cab locks, one key	●	
Mechanical suspension seat with heater	●	
Pilot-operated slidable joystick	●	
Console box height adjust system	●	
Automatic climate control		
Air conditioner & heater	●	
Defroster	●	
Starting Aid (air grid heater) for cold weather	●	
Centralized monitoring		
8" LCD display	●	
Engine speed or Trip meter/Accel.	●	
Engine coolant temperature gauge	●	
Max power	●	
Low speed/High speed	●	
Auto idle	●	
Overload	●	
Check Engine	●	
Air cleaner clogging	●	
Indicators	●	
ECO Gauges	●	
Fuel level gauge	●	
Hyd. oil temperature gauge	●	
Fuel warmer	●	
Warnings	●	
Communication error	●	
Low battery	●	
Clock	●	
Cabin lights		●
Cabin front window rain guard		●
Cabin roof-steel cover		●
Seat		
Adjustable air suspension seat with heater		●
Cabin FOPS/FOG (ISO/DIS 10262) Level 2		
FOPS (Falling Object Protective Structure) · ISO 3449 Level 2		●
FOG (Falling Object Guard) · Front & Top Guard		●
ISO/DIS 10262 Level 2 · Top Guard		●
Cabin ROPS (ISO 12117-2)		
ROPS (Roll Over Protective Structure) · ISO 12117-2	●	

SAFETY	STD	OPT
Battery master switch	●	
Rearview camera		●
AAVM (Advanced Around View Monitoring)		●
Four front working lights	●	
Travel alarm		●
Rear work lamp		●
Beacon lamp		●
Automatic swing brake	●	
Boom holding system	●	
Arm holding system	●	
Safety lock valve for boom cylinder with overload warning device		●
Safety lock valve for arm cylinder		●
Swing Lock System		●
Three outside rearview mirrors	●	
OTHER		
Booms		
4.1 m m; 13' 5" Mono-boom		●
4.6 m; 15' 1" Mono-boom	●	
4.9 m; 16' 9" 2-Piece boom		●
Arms		
1.9 m; 6' 3"		●
2.1 m; 6' 11"		●
2.5 m; 8' 2"	●	
3.0 m; 9' 1"		●
Removable clean-out dust net for cooler	●	
Removable reservoir tank	●	
Fuel pre-filter	●	
Fuel warmer		●
Self-diagnostics system	●	
Hi MATE (Remote Management System)	Mobile	●
	Satellite	●
Batteries (2 x 12 V x 100 Ah)	●	
Fuel filler pump (50 l/min)		●
Single-acting piping kit (breaker, etc.)		●
Double-acting piping kit (clamshell, etc.)		●
Rotating Piping Kit		●
Quick coupler piping		●
Quick coupler		●
Boom floating control		●
Accumulator for lowering work equipment	●	
Pattern change valve (2 patterns)		●
Fine Swing Control System		●
Tool kit		●
UNDERCARRIAGE		
Lower frame under cover (Additional)		●
Lower frame under cover (Normal)	●	
HX140LD Dozer blade		●
Track shoes		
Triple grouser shoes (600 mm; 24")	●	
Triple grouser shoes (700 mm; 28")		●
Triple grouser shoes (800 mm; 32")		●
Triple grouser shoes (900 mm; 36")		●
Double grouser shoes (600 mm; 24")		●
Double grouser shoes (700 mm; 28")		●
Track rail guard	●	
Full track rail guard		●

STD = Standard
OPT = Optional

- * Standard and optional equipment may vary. Contact your Hyundai dealer for more information.
- * The machine may vary according to international standards.
- * The photos may include attachments and optional equipment that are not available in your area.
- * Materials and specifications are subject to change without advance notice.
- * All imperial measurements rounded off to the nearest pound or inch.
- * The air conditioning system on this machine contains the fluorinated greenhouse gas refrigerant HFC-134a (Global Warming Potential = 1430). The system contains 0.65 kg of refrigerant which has a CO₂ equivalent of 0.9295 metric tonne.



PLEASE CONTACT

Hyundai Construction Equipment Europe nv

Hyundailaan 4, 3980 Tessenderlo, Belgium Tel: (32) 14-56-2200 Fax: (32) 14-59-3405 www.hyundai.eu

EN - 2017.11 Rev 3